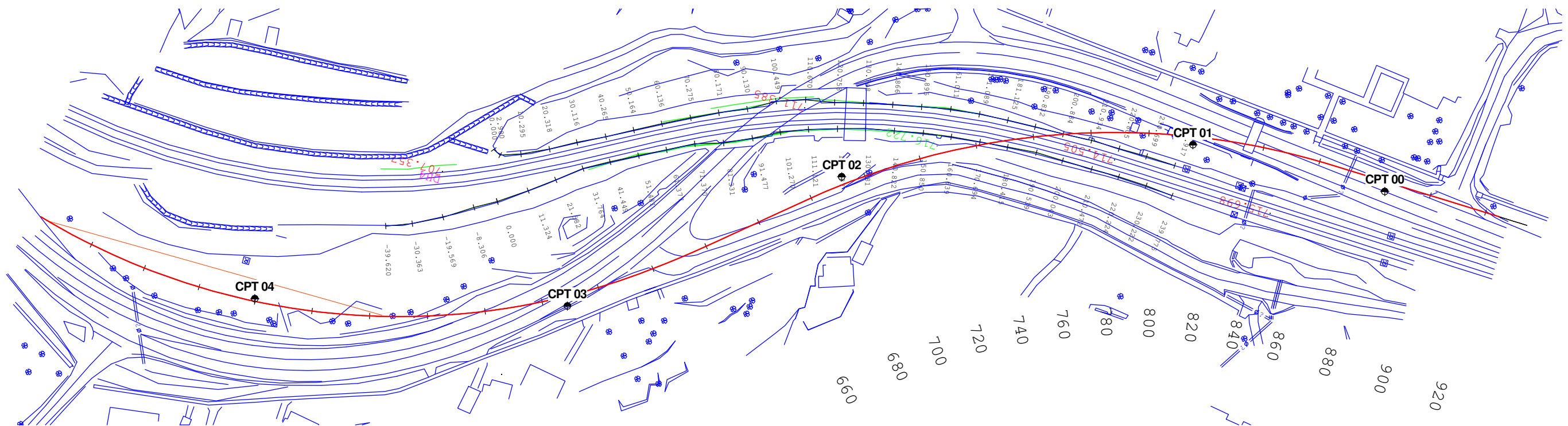
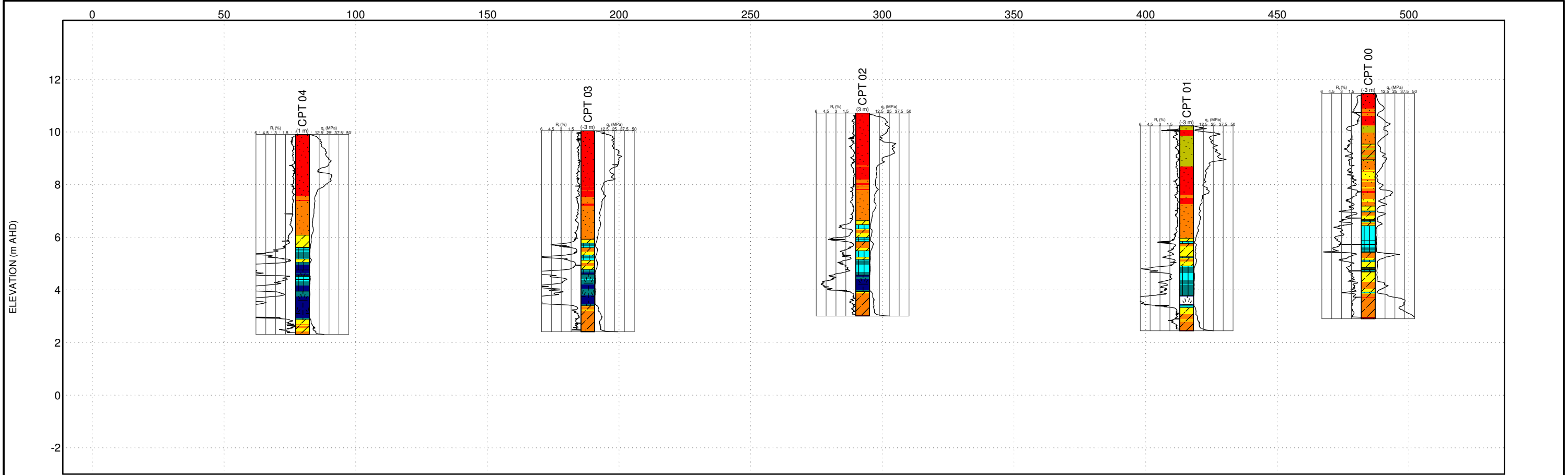


DATGEL\_CPT\_TOOL\_DGD\_LIB\_09.GLB Fence FENCE A3L DATGEL\_CPT\_TOOL\_DGD\_09.GPJ CPT FENCE.GDW Datgel CPT Tool (INI) Add-in 17/03/2009 15:26



METHOD: Robertson 1990

- |   |  |  |
|---|--|--|
| <span style="display: inline-block; width: 15px; height: 15px; background-color: blue; border: 1px solid black;"></span> 1 - Sensitive, fine grained  | <span style="display: inline-block; width: 15px; height: 15px; background-color: cyan; border: 1px solid black;"></span> 4 - Silt mixtures clayey silt to silty clay   | <span style="display: inline-block; width: 15px; height: 15px; background-color: red; border: 1px solid black;"></span> 7 - Gravelly sand to sand            |
| <span style="display: inline-block; width: 15px; height: 15px; background-color: darkblue; border: 1px solid black;"></span> 2 - Organic soil-peats   | <span style="display: inline-block; width: 15px; height: 15px; background-color: yellow; border: 1px solid black;"></span> 5 - Sand mixtures; silty sand to sand silty | <span style="display: inline-block; width: 15px; height: 15px; background-color: olive; border: 1px solid black;"></span> 8 - Very stiff sand to clayey sand |
| <span style="display: inline-block; width: 15px; height: 15px; background-color: teal; border: 1px solid black;"></span> 3 - Clays-clay to silty clay | <span style="display: inline-block; width: 15px; height: 15px; background-color: orange; border: 1px solid black;"></span> 6 - Sands; clean sands to silty sands       | <span style="display: inline-block; width: 15px; height: 15px; background-color: green; border: 1px solid black;"></span> 9 - Very stiff fine grained        |

MAP KEY  
 Cone penetration test



- |   |  |
|---|--|
| <span style="display: inline-block; width: 15px; height: 15px; border: 1px dotted black;"></span> SP                      | <span style="display: inline-block; width: 15px; height: 15px; border: 1px dashed black;"></span> OH |
| <span style="display: inline-block; width: 15px; height: 15px; border: 1px solid black; border-style: dashed;"></span> SM |  |
| <span style="display: inline-block; width: 15px; height: 15px; border: 1px solid black; border-style: dotted;"></span> CH |  |

	TITLE CPT CLIENT CPT ENGINEER SOMEWHERE WORLD CPT TOOL PROJECT INFERRED SUBSURFACE SECTION		DRAWN A. Smith	DATE 17/03/2009
	CHECKED B. Jones		DATE 17/03/2009	
SCALE H 1:1500 V 1:150			A3	
PROJECT No ABC		FIGURE No Figure 1		